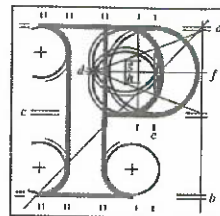


Our Case Number: ABP-314724-22

Planning Authority Reference Number:



**An
Bord
Pleanála**

Failte Ireland
Aras Failte
88-95 Amiens Street
Dublin 1
D01 WR86

Date: 13 December 2022

Re: Railway (Metrolink - Estuary to Charlemont via Dublin Airport) Order [2022]
Metrolink. Estuary through Swords, Dublin Airport, Ballymun, Glasnevin and City Centre to
Charlemont, Co. Dublin

Dear Sir / Madam,

An Bord Pleanála has received your recent submission in relation to the above-mentioned proposed Railway Order and will take it into consideration in its determination of the matter.

The Board will revert to you in due course with regard to the matter.

Please be advised that copies of all submissions/observations received in relation to the application will be made available for public inspection at the offices of the relevant County Council(s) and at the offices of An Bord Pleanála when they have been processed by the Board.

More detailed information in relation to strategic infrastructure development can be viewed on the Board's website: www.pleanala.ie.

If you have any queries in the meantime, please contact the undersigned. Please quote the above mentioned An Bord Pleanála reference number in any correspondence or telephone contact with the Board.

Yours faithfully,

Niamh Thornton
Executive Officer
Direct Line: 01-8737247

| | | |
|---------------------------|----------------|--|
| Tel | Tel | (01) 858 8100 |
| Glaó Áitiúil | LoCall | 1890 275 175 |
| Facs | Fax | (01) 872 2684 |
| Láithreán Gréasáin | Website | www.pleanala.ie |
| Ríomhphost | Email | bord@pleanala.ie |

| | |
|----------------------|-----------------------|
| 64 Sráid Maoilbhríde | 64 Marlborough Street |
| Baile Átha Cliath 1 | Dublin 1 |
| D01 V902 | D01 V902 |

An Bord Pleanála,
64 Marlborough Street,
Dublin 1
D01 V902

By online submission portal

24th November 2022

Ref: "Railway (Metrolink-Estuary to Charlemont via Dublin Airport) Order 2022"

Dear Sir/Madam,

Fáilte Ireland, the National Tourism Development Authority, welcomes the opportunity to make a submission on the Draft Railway Order for Metrolink. From a tourism perspective, Fáilte Ireland is fully supportive of this infrastructure project and are pleased to see it progress to the planning phase. We believe it is a vital piece of tourism infrastructure which exists in most capital cities and Ireland remains as one of only a small number of countries in Europe without a metro or a rail connection to its main international airport.

Tourism and transport go hand-in-hand and tourism has a high dependency on public transport, in particular for its successful operation. Dublin Airport is the key access point for the island of Ireland and the dominant airport accounting for in excess of 80% of all air passengers. Therefore, the visitor experience and the ease of transit of our visitors to and from the airport is vitally important. Metrolink will be a key enabler to creating an improved visitor experience and first/last experience that visitors have of the country.

Nationally, Dublin accounts for over two thirds of all overseas tourists to Ireland. Its traditionally strong air access has also made Dublin a key city break destination in Ireland. For many overseas consumers, Dublin is their only experience of Ireland. Tourism revenue pre pandemic was €2.6bn, 85% of this coming from international tourists once you allow for air and sea fares. Tourism is also important in terms of employment, with the industry supporting just under 70,000 jobs in 2019 in Dublin.

International tourists visiting Dublin and indeed Ireland expect a high-quality transport system. For example, 75% of overseas holidaymakers visiting Dublin in 2018 were travelling to Ireland for the first time. The vast majority (67%) of visitors on a city break to Dublin do not hire cars (Fáilte Ireland

Survey of Overseas Travellers 2018), but rather use public transport (or indeed walk) to navigate around the city. Therefore, an efficient and reliable transport system is a key requirement and enabler to creating a great visitor experience.

Beyond the clear benefits Metrolink will have for passengers transiting to and from Dublin airport/Dublin City Centre, it will also create an integrated transport network which connects Irish Rail, DART+, Luas and BusConnects services. Therefore, the project has an essential part to play in enabling sustainable visitor movement and transit from Dublin to our regional cities and towns.

Driving decarbonisation of the tourism sector is a key priority of Fáilte Ireland's strategy. Fáilte Ireland is committed to working towards ensuring that the tourism sector plays its part to help deliver Ireland's commitments under the Climate Action Plan. It is our ambition to be amongst the world-leaders in sustainable tourism practices. A key guiding principle for sustainable tourism development in Ireland is that the tourism sector will support and promote efforts to move to more sustainable forms of transport around Ireland. Metrolink combined with ongoing investment in other areas of public transport including BusConnects, Dart + and in intercity rail services will help to decarbonise the transport sector and aligns with government policy for sustainable tourism development in Ireland.

Fáilte Ireland will continue to ensure that all tourism initiatives are planned, developed and managed in a sustainable and integrated manner. The main objective of this is to protect, enhance and promote both our natural and built heritage for the common benefits for visitor, industry, community and the environment. Therefore, continuing to shift our visitors onto sustainable modes of transport is a priority which will also result in a significantly improved visitor experience.

We thank you for your time and consideration of our submission. If further information is required on any of the detail of this submission, please do not hesitate to contact Fáilte Ireland as per details below:

Yours Sincerely,



Shane Dineen
Manager of Environment and Planning, Fáilte Ireland